

GPX

GPX Begin again **150s**
Legend

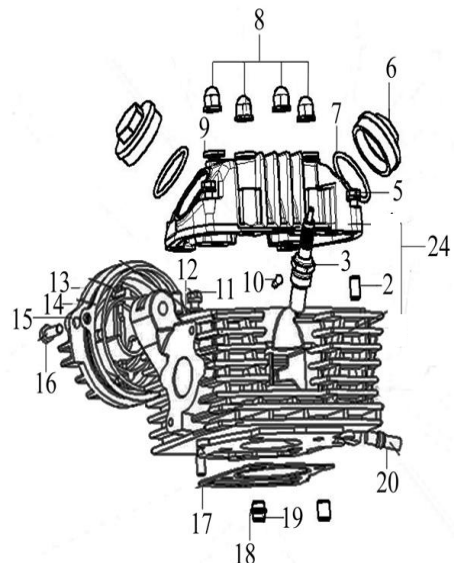
**BEGIN
AGAIN**
Est. 2016



PART CATALOG

ฝาสูบ (HEAD COMP.,CYLINDER)

LEG150-01



PICTURE

NO.

GPX CODE

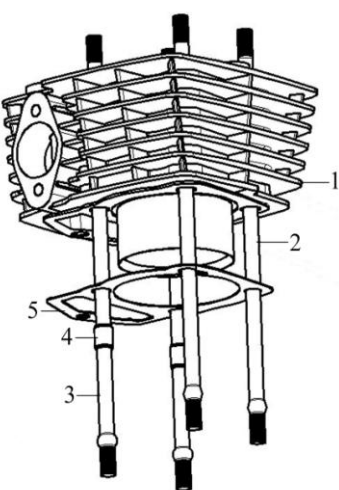
ENGLISH DESCRIPTION

QTY

2	CR5-01-02	PIN,DOWEL	2
3	CR5-01-03-TH	PLUG,SPARK	1
5	CR5-01-05	BOLT,HEXAGON FLANGE	4
6	CR5-01-06	CAP,TAPPET ADJUSTING HOLE	2
7	CR5-01-07	RING,SEAL	2
8	CR5-01-08	ACORN NUT	4
9	CR5-01-09	WASHER,PLAIN	4
10	CR5-01-10	STOPPER	1
11	CR5-01-11	BOLT,HEXAGON FLANGE	1
12	CR5-01-12	WASHER,PLAIN	1
13	CR5-01-13	RING,SEAL	1
14	CR5-01-14	GASKET,CYLINDER HEAD LEFT SIDE COVER	1
15	CR5-01-15	COVER COMP.,CYLINDER HEAD LEFT SIDE	1
16	CR5-01-16	BOLT,HEXAGON FLANGE	2
17	CR5/150-01-17	GASKET,CYLINDER HEAD	1
18	CR5-01-18	RING,SEAL	1
19	CR5-01-19	PIN,DOWEL	2
20	CR5-01-20	STUD	2
24	CR5/150-01-24	CYLINDER HEAD KIT	1
25	CR5/150-01-25	GASKET WHOLE SET	1

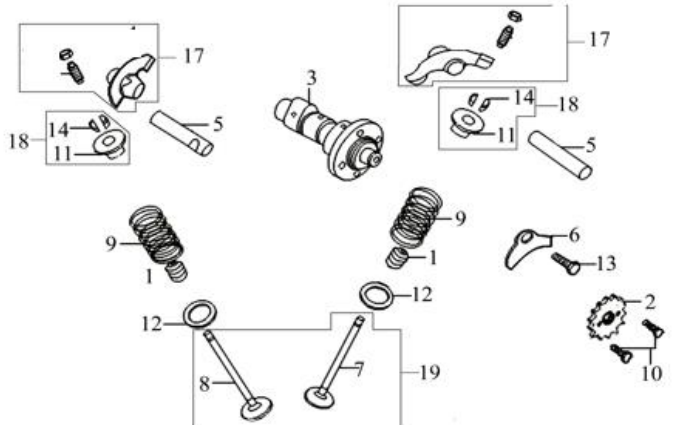
เสื่อรูป (CYLINDER COMP.)

LEG150-02

PICTURE	NO.	GPX CODE	ENGLISH DESCRIPTION	QTY
	1	CR5/150-02-01	BODY SET,CYLINDER	1
	2	CR5/150-02-02	BOLT,STUD A	2
	3	CR5/150-02-03	BOLT,STUD B	2
	4	CR5-02-04	PIN,DOWEL	2
	5	CR5-02-05	GASKET,CYLINDER	1

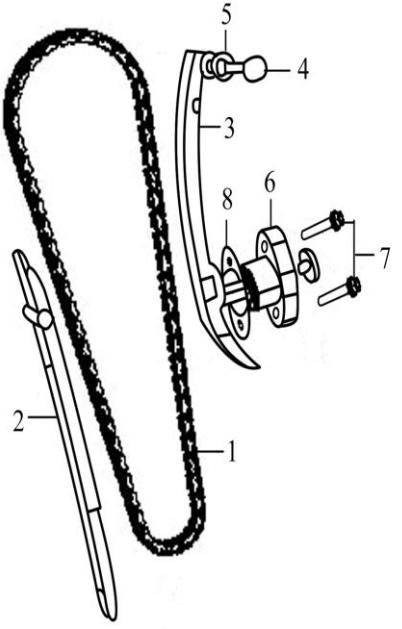
กลไกวาล์ว (VALVE ACTUATING MECHANISM)

LEG150-03

PICTURE	NO.	GPX CODE	ENGLISH DESCRIPTION	QTY	
 <p>The diagram shows an exploded view of a valve actuating mechanism. Part 1 is a hexagonal bolt. Part 2 is a gear. Part 3 is a shaft. Part 4 is a cotter pin. Part 5 is a valve rocker arm shaft. Part 6 is a check plate. Part 7 is an inlet valve. Part 8 is an exhaust valve. Part 9 is an outer valve spring. Part 10 is a cross-recessed countersunk screw. Part 11 is a valve spring retainer. Part 12 is an outer valve spring seat. Part 13 is a cross-recessed countersunk screw. Part 14 is a cotter pin. Part 15 is a valve spring clip. Part 16 is a valve spring seat. Part 17 is a valve rocker arm assembly. Part 18 is a valve spring seat clip. Part 19 is the complete valve kit.</p>	1	CR5-03-01	SHIELD,OIL	2	
	2	CR5/150-03-02	SPROCKET,TIMING DRIVEN	1	
	3	CR5/150-03-03	CAMSHAFT ASSY.	1	
	5	CR5-03-05	SHAFT,VALVE ROCKER ARM	2	
	6	CR5-03-06	CHECK PLATE,VALVE ROCKER ARM SHAFT	1	
	7	CR5-03-07	VALVE,INLET	1	
	8	CR5-03-08	VALVE,EXHAUST	1	
	9	CR5-03-09	SPRING,VALVE(OUTER)	2	
	10	CR5-03-10	BOLT,HEXAGON	2	
	11	CR5-03-11	RETAINER,VALVE SPRING	2	
	12	CR5-03-12	SEAT,VALVE SPRING OUTER	2	
	13	CR5-03-13	SCREW,CROSS RECESSED COUNTERSUNK HEAD	1	
	14	CR5-03-14	COTTER,VALVE	4	
	17	CR5-03-17	ARM ASSY.,VALVE ROCKER	2	
	18	CR5-03-18	CLIP & VALVE SPRING SEAT KIT	2	
	19	CR5-03-19	VALVE KIT	1	

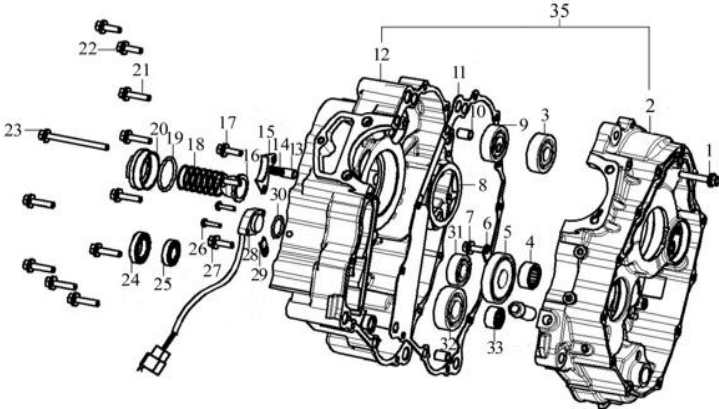
โซ่รอกลิ้น (CHAIN,TIMING)

LEG150-04

PICTURE	NO.	GPX CODE	ENGLISH DESCRIPTION	QTY
	1	CR5/150-04-01	CHAIN,TIMING	1
	2	CR5/150-04-02	GUIDE PLATE,CHAIN	1
	3	CR5/150-04-03	ADJUSTMENT PANEL,CHAIN	1
	4	CR5-04-04	CLEVIS PIN,CHAIN ADJUSTMENT PANEL	1
	5	CR5-04-05	WASHER,PLAIN	1
	6	CR5-04-06	TENSIONER ASSY.,CAM CHAIN	1
	7	CR5-04-07	BOLT,HEXAGON FLANGE	2
	8	CR5-04-08	GASKET,CAM CHAIN TENSIONER	1

เครื่อง (CRANKCASE ASSY.)

LEG150-05

PICTURE	NO.	GPX CODE	ENGLISH DESCRIPTION	QTY
	1	CR5-05-01	BOLT,HEXAGON FLANGE	1
	2	CR5-05-02	BODY SET,RIGHT CRANKCASE	1
	3	CR5-05-03	BEARING	1
	4	CR5-05-04	BEARING	1
	5	CR5-05-05	BEARING 6006 x 2120	1
	6	CR5-05-06	CHECK PLATE,MAINSHAFT BEARING	1
	7	CR5-05-07	BOLT,HEXAGON FLANGE	1
	8	CR5-05-08	OIL SEAL	1
	9	CR5-05-09	BEARING	1
	10	CR5-05-10	PIN,DOWEL	2
	11	CR5-05-11	GASKET,CRANKCASE	1
	12	CR5-05-12	BODY SET,LEFT CRANKCASE	1
	13	CR5-05-13	PRESSING PIN COMP.	1
	14	CR5-05-14	SPRING,COMPRESSION	1
	15	CR5-05-15	PLATE,TIMING CHAIN LIMIT	1
	16	CR5-05-16	SCREEN,OIL STRAINER	1
	17	CR5-05-17	BOLT,HEXAGON FLANGE	2
	18	CR5-05-18	SPRING,COMPRESSION	1
	19	CR5-05-19	RING,SEAL	1
	20	CR5-05-20	CAP,TAPPET ADJUSTING HOLE	1
	21	CR5-05-21	BOLT,HEXAGON FLANGE	8
	22	CR5-05-22	BOLT,HEXAGON FLANGE	2
	23	CR5-05-23	BOLT,HEXAGON FLANGE	1
	24	CR5-05-24-TH	OIL SEAL (20-34-7)	1
	25	CR5-05-25-TH	OIL SEAL (14-28-7)	1
	26	CR5-05-26	SCREW,CROSS RECESSED PAN HEAD/WASHER,ELASTIC/WASHER,PLAIN COMP.	2

เครื่อง (CRANKCASE ASSY.)

LEG150-05

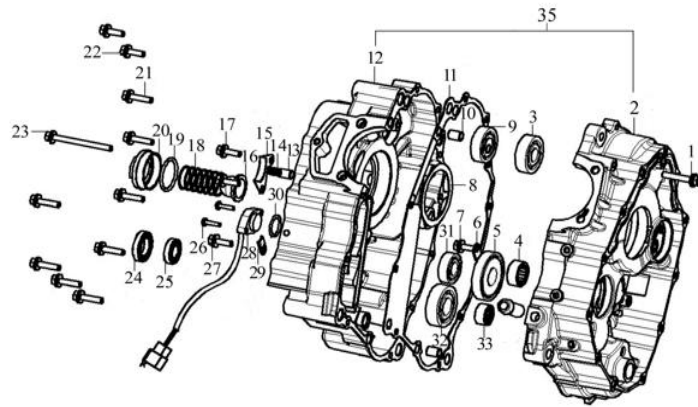
PICTURE

NO.

GPX CODE

ENGLISH DESCRIPTION

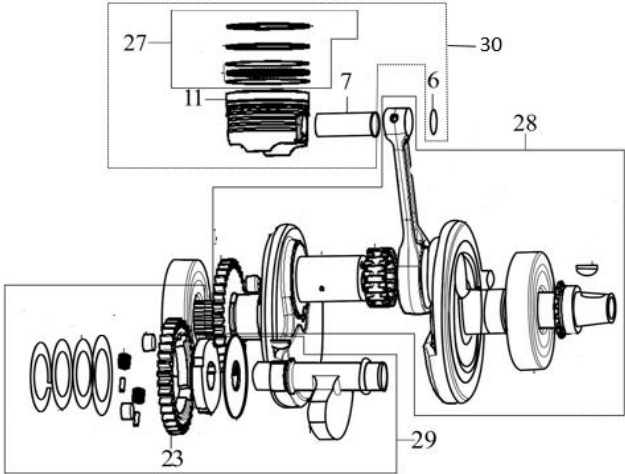
QTY



NO.	GPX CODE	ENGLISH DESCRIPTION	QTY
27	CR5-05-27	BOLT, HEXAGON	1
28	CR5-05-28	SWITCH COMP., GEAR INDICATOR	1
29	CR5-05-29	DISC, TENSION	1
30	CR5-05-30	RING, SEAL	1
31	CR5-05-31	BEARING	1
32	CR5-05-32	BEARING	1
33	CR5-05-33	BEARING	1
35	CR5-05-35	CRANKCASE KIT	1

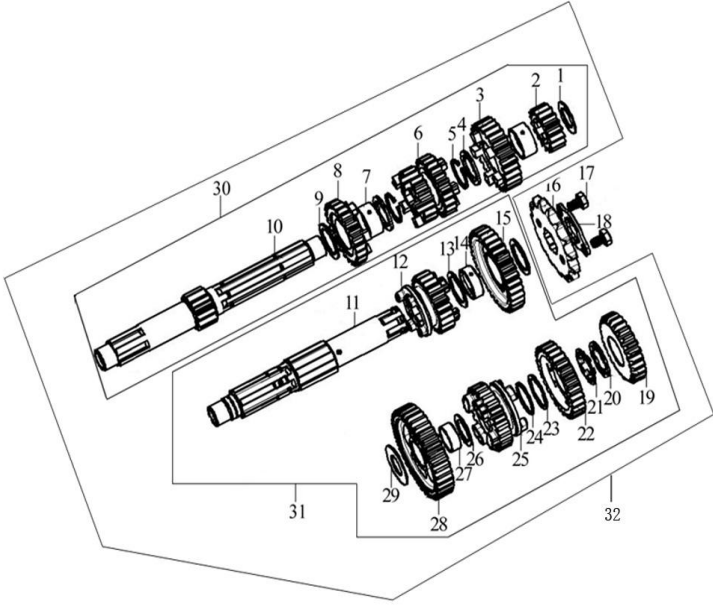
เพลาค้อเหวียง, ลูกสูบ (CRANKSHAFT COMP.)

LEG150-06

PICTURE	NO.	GPX CODE	ENGLISH DESCRIPTION	QTY
	6	CR5/150-06-06	CHECK RING,STEEL CABLE BAFFLE	2
	7	CR5/150-06-07	PIN,PISTON	1
	11	CR5/150-06-11	PISTON COMP.	1
	23	CR5/150-06-23	GEAR,BALANCING ARBOR DRIVEN	1
	27	CR5/150-06-27	RING SET,PISTON	1
	28	CR5/150-06-28	CRANKSHAFT COMP.	1
	29	CR5/150-06-29	BALANCING ARBOR COMP.	1
	30	CR5/150-06-30	PISTON & RING SET	1

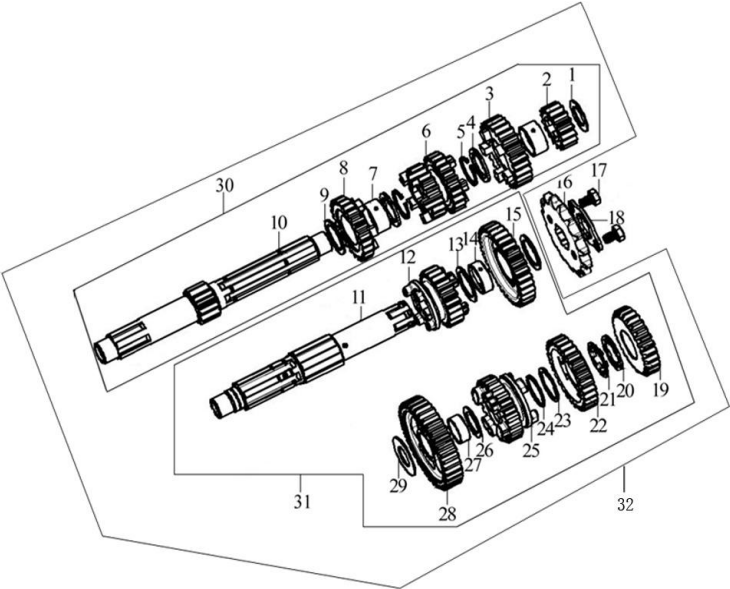
ส่งกำลัง, เหล็ก (ACTUATING MECHANISM ASSY.)

LEG150-07

PICTURE	NO.	GPX CODE	ENGLISH DESCRIPTION	QTY
	1	CR5-07-01	CHECK RING, SHOULDER	1
	2	CR5-07-02	GEAR, MAINSHAFT SECOND	1
	3	CR5-07-03	GEAR, MAINSHAFT SIXTH	1
	4	CR5-07-04	WASHER, SPLINE	2
	5	CR5-07-05	CHECK RING, ELASTIC	2
	6	CR5-07-06	GEAR, MAINSHAFT THIRD	1
	7	CR5-07-07	COLLAR	2
	8	CR5-07-08	GEAR, MAINSHAFT FIFTH	1
	9	CR5-07-09	CHECK RING, SHOULDER	1
	10	CR5-07-10	MAINSHAFT	1
	11	CR5-07-11	COUNTERSHAFT	1
	12	CR5-07-12	GEAR, COUNTERSHAFT SIXTH	1
	13	CR5-07-13	CHECK RING, SHOULDER	2
	14	CR5-07-14	COLLAR	1
	15	CR5-07-15	GEAR, COUNTERSHAFT SECOND	1
	16	CR5-07-16-TH	SPROCKET, COUNTERSHAFT DRIVING	1
	17	CR5-07-17	BOLT, HEXAGON	1
	18	CR5-07-18	PLATE, COUNTERSHAFT DRIVING SPROCKET FIXING	1
	19	CR5-07-19	GEAR, COUNTERSHAFT FOURTH	1
	20	CR5-07-20	WASHER, SPLINE	1
	21	CR5-07-21	WASHER, SPLINE	1
	22	CR5-07-22	GEAR, COUNTERSHAFT THIRD	1
	23	CR5-07-23	WASHER, SPLINE	1
	24	CR5-07-24	CHECK RING, ELASTIC	1
	25	CR5-07-25	GEAR, COUNTERSHAFT FIFTH	1
	26	CR5-07-26	CHECK RING, SHOULDER	1
	27	CR5-07-27	COLLAR	1

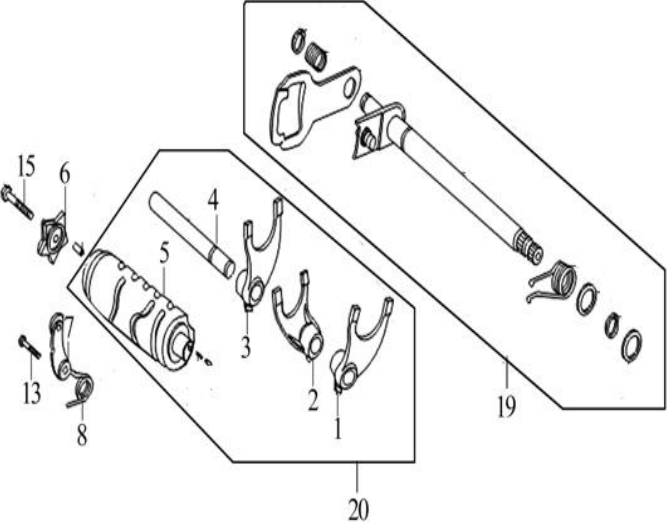
ส่งกำลัง, เหล็ก (ACTUATING MECHANISM ASSY.)

LEG150-07

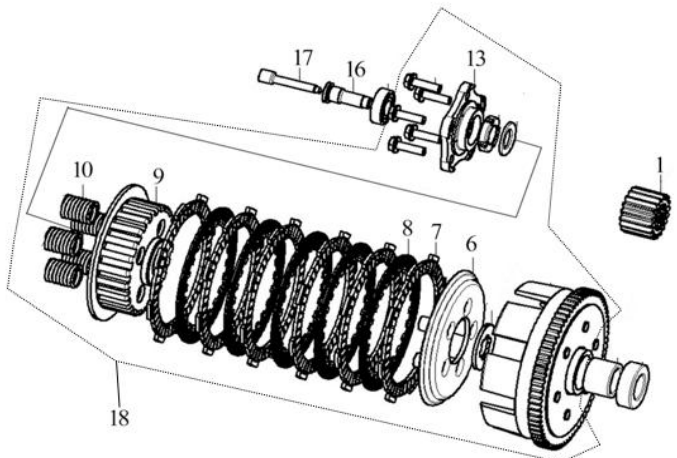
PICTURE	NO.	GPX CODE	ENGLISH DESCRIPTION	QTY
	28	CR5-07-28	GEAR,COUNTERSHAFT FIRST	1
	29	CR5-07-29	CHECK RING,SHOULDER	1
	30	CR5-07-30	MAINSHAFT COMP.	1
	31	CR5-07-31	COUNTERSHAFT COMP.	1
	32	CR5-07-32	MAINSHAFT&COUNTERSHAFT KIT	1

กลไกการะปลูกเกียร์ (SPEED CONTROL MECHANISM ASSY.)

LEG150-08

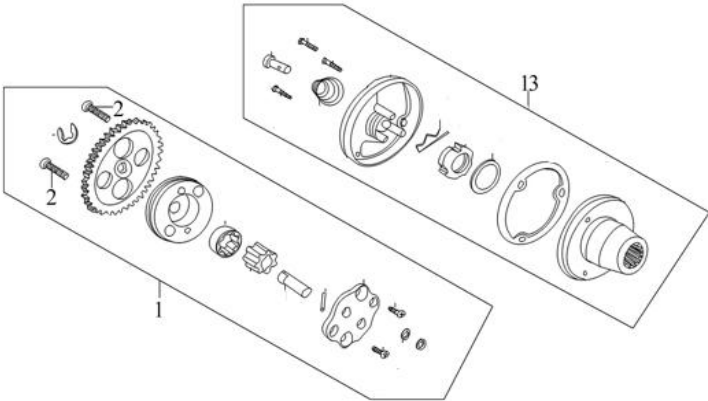
PICTURE	NO.	GPX CODE	ENGLISH DESCRIPTION	QTY	
	1	CR5-08-01	FORK,GEAR SHIFT	1	
	2	CR5-08-02	FORK,GEAR SHIFT	1	
	3	CR5-08-03	FORK,GEAR SHIFT	1	
	4	CR5-08-04	SHAFT,SHIFT FORK GUIDE	1	
	5	CR5-08-05	DRUM COMP.,GEAR SHIFT	1	
	6	CR5-08-06	PLATE,DRUM STOPPER	1	
	7	CR5-08-07	CHECK PLATE ASSY.	1	
	8	CR5-08-08	SPRING,TORSIONAL	1	
	13	CR5-08-13	BOLT,HEXAGON	1	
	15	CR5-08-15	BOLT,HEXAGON	1	
	19	CR5-08-19	ARM COMP.,GEAR CHANGE	1	
	20	CR5-08-20	DRUM COMP.,GEAR SHIFT	1	

คลัทช์ (CLUTCH ASSY.) **LEG150-09**

PICTURE	NO.	GPX CODE	ENGLISH DESCRIPTION	QTY	
	1	CR5/150-09-01	GEAR,PRIMARY DRIVING	1	
	6	CR5/150-09-06	PLATE,CLUTCH PRESSURE	1	
	7	CR5-09-07	DISK,CLUTCH FRICTION	6	
	8	CR5-09-08	PLATE,CLUTCH	5	
	9	CR5/150-09-09	CENTER COMP.,CLUTCH	1	
	10	CR5-09-10	SPRING,CLUTCH	5	
	13	CR5/150-09-13	PLATE,CLUTCH LIFTER	1	
	16	CR5-09-16	PUSH ROD	1	
	17	CR5-09-17	EJECT-ROD	1	
	18	CR5/150-09-18	CLUTCH KIT	1	

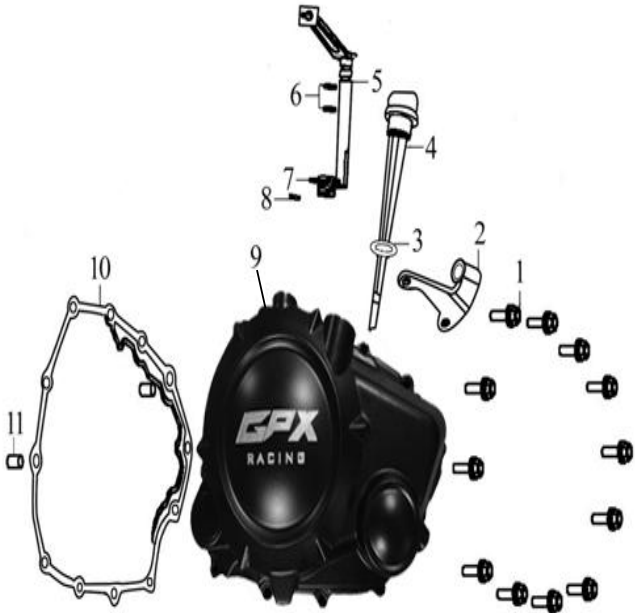
ปั๊มพีและกรองน้ำมันเครื่อง (LUBRICATING GEAR)

LEG150-10

PICTURE	NO.	GPX CODE	ENGLISH DESCRIPTION	QTY
	1	CR5/150-10-01	PUMP ASSY.,OIL	1
	2	CR5-10-02	SCREW,CROSS RECESSED COUNTERSUNK HEAD	2
	13	CR5-10-13	OIL FILTER ASSY.,SECONDARY	1

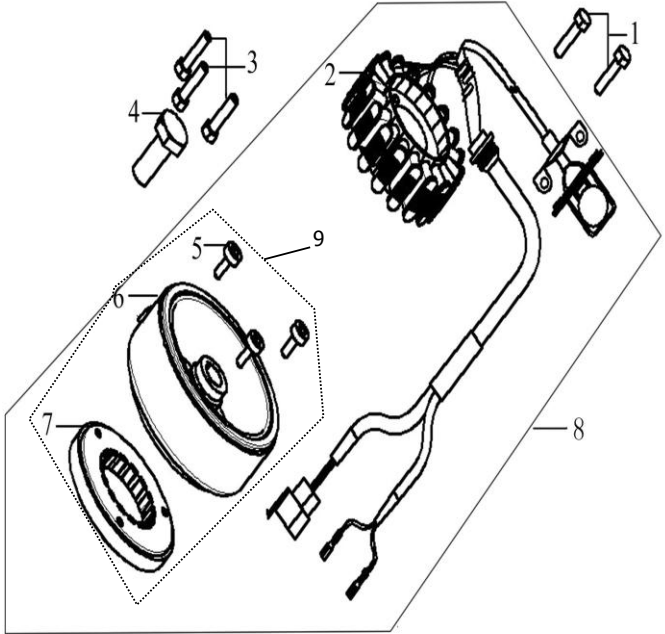
ฝาครอบเครื่องข้างขวา (COVER COMP.,RIGHT CRANKCASE)

LEG150-11

PICTURE	NO.	GPX CODE	ENGLISH DESCRIPTION	QTY
	1	CR5-11-01	BOLT,HEXAGON FLANGE	12
	2	CR5-11-02	PLATE,CLUTCH CABLE LOCATING	1
	3	CR5-11-03	RING,SEAL	1
	4	CR5-11-04	GAUGE COMP.,OIL LEVEL	1
	5	CR5-11-05	JOYSTICK ASSY.,CLUTCH	1
	6	CR5-11-06	RING,SEAL	2
	7	CR5-11-07	SPRING,TORSIONAL	1
	8	CR5-11-08	BACKING PIN	1
	9	CR5/150-11-09	COVER COMP.,RIGHT CRANKCASE	1
	10	CR5-11-10	GASKET,RIGHT CRANKCASE COVER	1
	11	CR5-11-11	PIN,DOWEL	2

ล้อแม่เหล็กและแม่ถั่ว (GENERATOR ASSY.)

LEG150-12

PICTURE	NO.	GPX CODE	ENGLISH DESCRIPTION	QTY
	1	CR5-12-01	BOLT,HEXAGON FLANGE	2
	2	CR5/150-12-02	STATOR COMP.	1
	3	CR5-12-03	BOLT,HEXAGON FLANGE	3
	4	CR5-12-04	BOLT,HEXAGON FLANGE	1
	5	CR5-12-05	SCREW,HEXAGON SOCKET	3
	6	CR5-12-06	ROTOR COMP.	1
	7	CR5-12-07	BODY ASSY.,STARTING CLUTCH	1
	8	CR5-12-08	GENERATOR ASSY.	1
	9	CR5-12-09	ROTOR COMP.	1

ฝาครอบแตรข้างซ้าย (COVER COMP.,LEFT CRANKCASE)				LEG150-13
PICTURE	NO.	GPX CODE	ENGLISH DESCRIPTION	QTY
	1	CR5-13-01	COVER COMP.,LEFT REAR	1
	2	CR5-13-02	BOLT,HEXAGON FLANGE	2
	3	CR5-13-03	RING,SEAL	1
	4	CR5-13-04	COVER,GEAR CHAMBER	1
	5	CR5-13-05	BOLT,HEXAGON FLANGE	3
	6	CR5-13-06	COVER,LEFT DECORATING	1
	7	CR5-13-07	RING,SEAL	1
	8	CR5-13-08	COVER,INSPECTION	1
	9	CR5-13-09	RING,SEAL	1
	10	CR5-13-10	BOLT,HEXAGON FLANGE	1
	11	CR5-13-11	BOLT,HEXAGON FLANGE	5
	12	CR5-13-12	BOLT,HEXAGON FLANGE	2
	13	CR5-13-13	COVER COMP.,LEFT FRONT	1
	14	CR5-13-14	GASKET,LEFT FRONT COVER	1
	15	CR5-13-15	PIN,DOWEL	2

สตาร์ทไฟฟ้า (ELECTRIC STARTER ASSY)

LEG150-14

PICTURE	NO.	GPX CODE	ENGLISH DESCRIPTION	QTY
	1	CR5-14-01	DISK GEAR	1
	2	CR5-14-02	GEAR IDLE,ELECTRIC STARTING	1
	3	CR5-14-03	SHAFT ASSY.,DUPLEX GEAR	1
	4	CR5-14-04	CHECK RING,SHOULDER	4
	5	CR5-14-05	SHAFT ASSY.,DUPLEX GEAR	1
	6	CR5-14-06	DUPLEX GEAR,ELECTRIC STARTING	1
	7	CR5-14-07	MOTOR ASSY.,STARTING	1
	8	CR5-14-08	BOLT,HEXAGON FLANGE	2
	9	CR5-14-09	GEAR IDLE,ELECTRIC STARTING W/H SHAFT	1
	10	CR5-14-10	DUPLEX GEAR,ELECTRIC STARTING W/H SHAFT	1

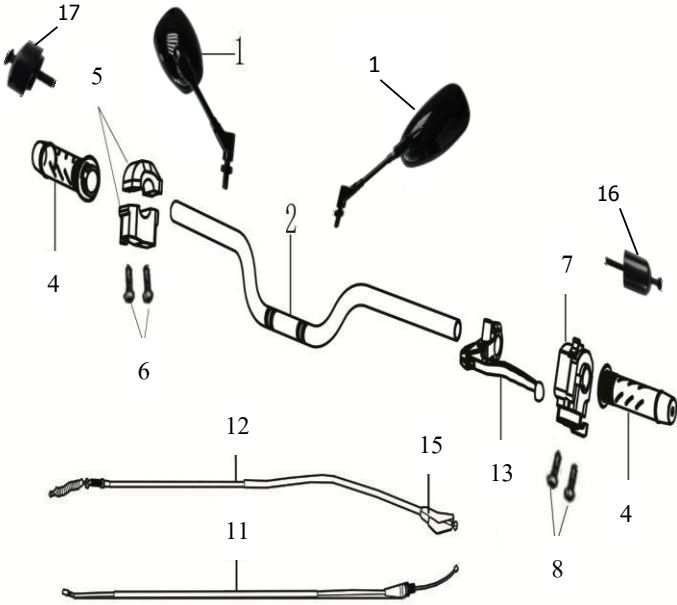
ไฟหน้าและเรือนไมล์ (LIGHT & METER)

LEG150S-15

PICTURE	NO.	GPX CODE	ENGLISH DESCRIPTION	QTY
	1	LEG-15-01	Headlight	1
	2	LEG-15-02	Headlight bracket	1
	3	LEG-15-03	Meter assy	1
	4	LEG-15-04	Meter decoration cover	1
	5	LEG-15-05	Bolt M6*50	2
	6	LEG-15-06	Nut M6	2
	7	LEG-15-07	Bolt M6*12	2
	8	LEG-15-08	Bolt M6*25	2
	9	LEG-15-09	Bolt M6*16	2
	10	LEG-15-10	Bolt M8*20	2
	11	LEG-15-11	All set lock w/h fuel tank cap	1
	13	LEG-15-13	Plug for headlight	4
	14	LEG-15-14	Bush for headlight	2
	15	LEG-15-15	Headlight, Bulb	1
	16	LEG-15-16	Dimmer lamp, Front	1

บังค้ำเหลี่ยม (HANDLE BAR & REAR MIRROR)

LEG150S-16

PICTURE	NO.	GPX CODE	ENGLISH DESCRIPTION	QTY	
	1	LEG150-16-01	Side mirror	2	
	2	LEG150-16-02	Handle bar	1	
	4	LEG150-16-04	Handle grsip LH.	1	
		LEG150-16-04-01	Handle grsip RH.	1	
	5	LEG150-16-05	R switch assy	1	
	6	LEG-16-06	Bolt	2	
	7	LEG150-16-07	L switch assy	1	
	8	LEG-16-08	Bolt	2	
	11	LEG150-16-11	Accelerator cable	1	
	12	LEG150-16-12	Clutch cable	1	
	13	LEG-16-13	Clutch lever	1	
	15	LEG-16-15	Rubber for clutch cable	1	
	16	LEG150-16-16	Weight with bolt, LH handle bar	1	
	17	LEG150-16-17	Weight with bolt, RH handle bar	1	

แผงคอ แขนรถ (STEERING STEEM)				LEG150S-17
PICTURE	NO.	GPX CODE	ENGLISH DESCRIPTION	QTY
	1	LEG150-17-01	Steering stem board, lower	1
	2	LEG150-17-02	Steering stem board with lower handle bar	1
	3	LEG-17-03	Nut GB/T923-2009 M24×1	1
	4	LEG-17-04	Washer φ24	1
	5	LEG-17-05	Bolt M8X25	6
	6	LEG-17-06	Nut	1
	7	LEG-17-07	Bolt M8X35	4
	8	LEG150-17-08	Handle bar clip, upper	2
	9	LEG-17-09	Bearing, upper returning	1
	10	LEG-17-10	Pedestal bearing, upper returning	2
	11	LEG-17-11	Reel, bearing, upper turning	2
	12	LEG-17-12	Steel ball, bearing, upper returning	1
	13	LEG-17-13	Fr.turning light LH.	1
	14	LEG-17-14	Nut M12	1
	15	LEG-17-15	Fr.turning light RH.	1
	16	LEG-17-16	Nut M12	1
	17	LEG-17-17	Bracket for Fr. Turning light LH.	1
	18	LEG-17-18	Bracket for Fr. Turning light RH.	1
	19	LEG-17-19	Clip for speedo cable φ6.5	1
	20	LEG-17-20	Bolt M6×12	1
	21	LEG-17-21	GPX RACING tag plate	1

โช้กอัพหน้า (FRONT SHOCK)

LEG150S-18

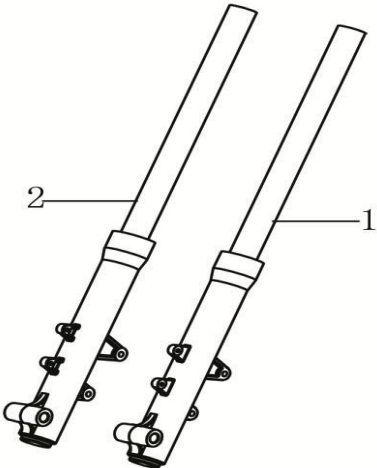
PICTURE

NO.

GPX CODE

ENGLISH DESCRIPTION

QTY



1

LEG150-18-01

Front shock L.

1

2

LEG150-18-02

Front shock R.

1

3

LEG150-18-03-TH

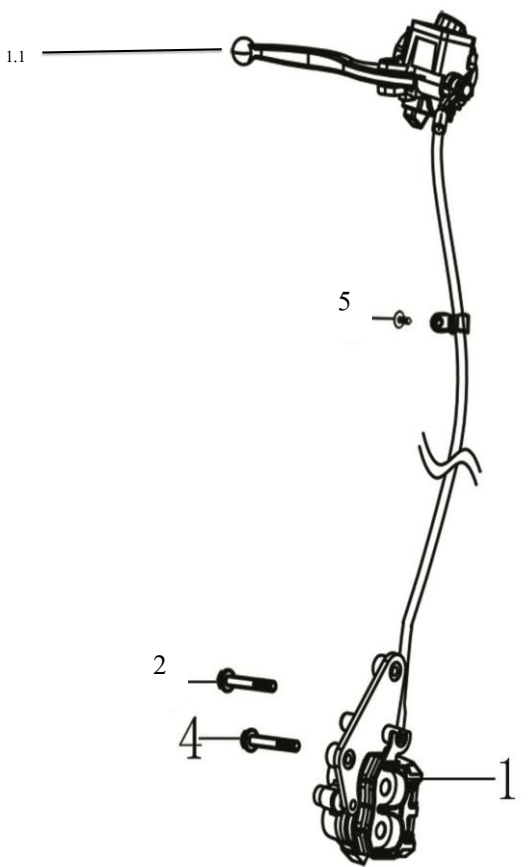
Front shock L.& R. cover

1

บังโคลนหน้า (FRONT FENDER)				LEG150S-19
PICTURE	NO.	GPX CODE	ENGLISH DESCRIPTION	QTY
	1	LEG150-19-01	Fr. Fender (Raw Material)	1
	1	LEG150S-19-01-02	Fr. Fender,Matt Black	1
	1	LEG150S-19-01-03	Fr. Fender,Matt Light Gray	1
	1	LEG150S-19-01-04	Fr. Fender, Matt Green	1
	2	LEG-19-02	Bracket A for Fr. Fender	1
	3	LEG-19-03	Bracket B for Fr. Fender	1
	4	LEG-19-04	Bolt M6×10	8
	5	LEG-19-05	Side reflector	2
	6	LEG-19-06	Bracket for side reflector RH.	1
	7	LEG-19-07	Bracket for side reflector LH.	1
	8	LEG-19-08	Bolt M6×16	4
	9	LEG-19-09	Nut for side reflector	2
	10	LEG-19-10	Spring For reflector	2
	11	LEG-19-11	Washer for reflector	2
12	LEG-19-12	Clip for speed counter cable φ8.5	1	
13	LEG-19-13	Bolt M8×40	1	
14	LEG-19-14	Nut M8	1	

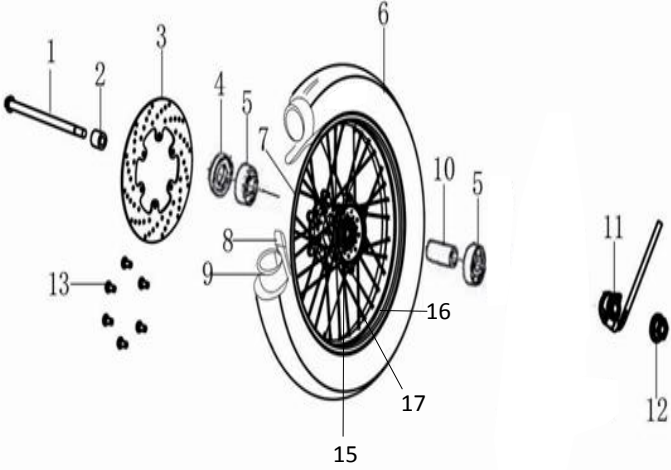
เบรคหน้า (FRONT BREAK PUMP)

LEG150S-20

PICTURE	NO.	GPX CODE	ENGLISH DESCRIPTION	QTY
	1	LEG150-20-01	Fr. Break pump assy	1
	1.1	LEG150-20-01-01-01	Brake lever	1
	2	LEG-20-02	Bolt M8×45	1
	4	LEG-20-04	Bolt M8×40	1
	5	LEG-20-05	Bolt M6×12	1
	7	LEG-20-07	Comp. FR. RH. brake shoe (disc.)	1

ล้อหน้า (FRONT WHEEL ASSY)

LEG150S-21

PICTURE	NO.	GPX CODE	ENGLISH DESCRIPTION	QTY
	1	LEG-21-01	Fr. Wheel axle	1
	2	LEG-21-02	Bush for Fr. Wheel RH.	1
	3	LEG-21-03	Disk, front brake	1
	4	LEG-21-04	Seal	1
	5	LEG-21-05	Bearing 6301-2RS	2
	6	LEG150-21-06-TH	Front outer tire	1
	7	LEG150-21-07-TH	Fr. Wheel Assy	1
	8	LEG-TRF-TH	Washer	1
	9	LEG-TINF-400-TH	Front inner tire	1
	10	LEG-21-10	Bush	1
	11	LEG-21-11	Speedo counter	1
	12	LEG-21-12	Nut M14×1.5	1
	13	LEG-21-13	Bolt	6
	15	LEG150-21-15	Fr. Wheel Hub Assy.	1
	16	LEG-21-16-TH	Fr. Wheel Rim	1
	17	LEG-21-17-TH	Spoke & Nipple Set, Front	1

ถังน้ำมัน (FUEL TANK)

LEG150S-22

PICTURE	NO.	GPX CODE	ENGLISH DESCRIPTION	QTY
	1	LEG150-22-01	Tank, Light(Raw Material)	1
	1	LEG150S-22-01-03	Tank, Matt Black	1
	1	LEG150S-22-01-04	Tank, Matt Light Gray	1
	1	LEG150S-22-01-05	Tank, Matt Green	1
	3	LEG-22-03	Bolt M6×25	2
	4	LEG-22-04	Bracket A for seat	1
	5	LEG-22-05	Bush for tank	2
	6	LEG-22-06	Rubber for tank	1
	7	LEG-22-07	Fuel switch	1
	8	LEG-22-08	Fuel sensor	1
	9	LEG-22-09	Nut M6	4
	10	LEG150-22-10	Oil pipe	2
	11	LEG-22-11	Oil fliter	1
	12	LEG-22-12	Rubber	2
	13	LEG-22-13	Clip for oil pipe	4
	16	LEG150S-22-17-TH	Emblem Legend	2
	17	LEG150S-22-18-TH	Pattern Tank rear Matt Black	1
		LEG150S-22-18-01-TH	Pattern Tank rear Matt Gray/Green	1

ฝาครอบข้าง (LEFT AND RIGHT COVER)

LEG150S-23

PICTURE	NO.	GPX CODE	ENGLISH DESCRIPTION	QTY	
	1	LEG150S-23-01-02	Side cover LH., Matt Black	1	
	1	LEG150S-23-01-03	Side cover LH., Light Matt Gray	1	
	1	LEG150S-23-01-04	Side cover LH., Matt Green	1	
	2	LEG150S-23-02-02	Side cover RH., Matt Black	1	
	2	LEG150S-23-02-03	Side cover RH., Light Matt Gray	1	
	2	LEG150S-23-02-04	Side cover RH., Matt Green	1	
	3	LEG-23-03	Bolt M6×16	1	
	4	LEG-23-04	Bolt M6×20	1	
	5	LEG-23-05	Bush	1	
	6	LEG-23-06	H aprons	1	
	7	LEG150-23-08-TH	Sticker, 150cc, Black	2	
	7	LEG150-23-08-01-TH	Sticker, 150cc, Gray	2	

ขาตั้งข้าง (SIDE SUPPORT)

LEG150S-24

PICTURE	NO.	GPX CODE	ENGLISH DESCRIPTION	QTY
	1	LEG-24-01	Side stand assy	1
	2	LEG-24-02	Spring for side stand	1
	3	LEG-24-03	Axle for side stand	1
	4	LEG-24-04	Nut M10×1.25	1
	5	LEG-24-05	Main stand	1
	6	LEG-24-06	Rubber for main stand	1
	7	LEG-24-07	Spring for main stand	1
	8	LEG-24-08	Axle for main stand	1
	9	LEG-24-09	Cycle for Main stand $\phi 17 \times \phi 23$	1
	10	LEG-24-10	Pin 3×30	1

สวิงอาร์ม บังโซ่ (SWING ARM & CHAIN BOX)

LEG150S-25

PICTURE	NO.	GPX CODE	ENGLISH DESCRIPTION	QTY
	1	LEG-25-01	Swing arm	1
	2	LEG-25-02	Axle for swing arm	1
	3	LEG-25-03	Nut M14×1.5	1
	4	LEG-25-04	Chain box	1
	5	LEG-25-05	Bolt M6×12	1
	6	LEG-25-06	Bolt M6×20	1
	7	LEG-25-07	Washer	2
	8	LEG-25-08-TH	Chain W/O Clip	1
	10	LEG-25-10	Chain adjuster	2
	11	LEG-25-11	Chain guide	1

ท่อไอเสีย (MUFFLER ASSY)

LEG150S-26

PICTURE

NO.

GPX CODE

ENGLISH DESCRIPTION

QTY

1

LEG150-26-01-TH

Muffler assy

1

2

LEG-26-02

Muffler bush

1

3

LEG-26-03

Nut GB/T802.1-2008 M8×22

2

4

LEG-26-04

Bolt M10×1.25×45

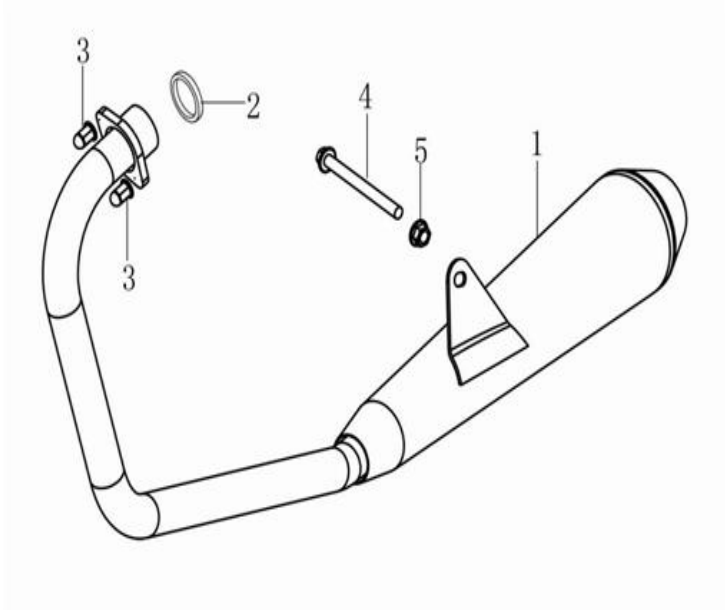
1

5

LEG-26-05

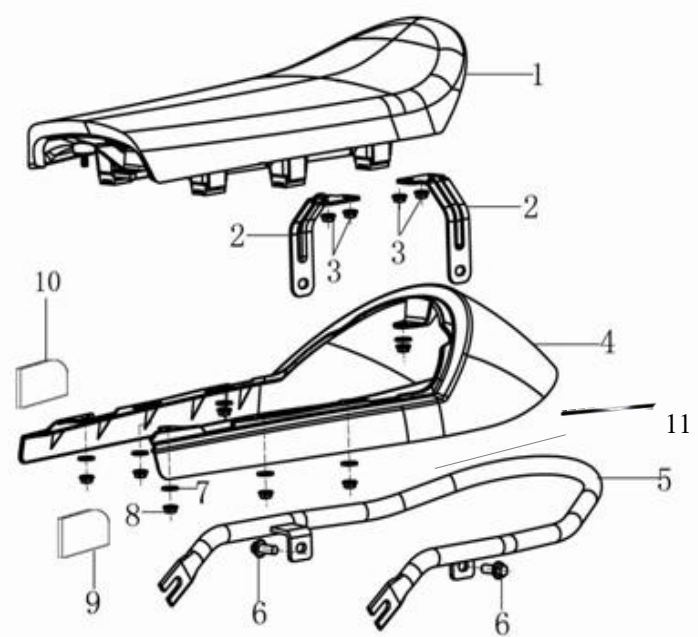
Nut M10×1.25

1



177 (SEAT & SEAT COVER)

LEG150S-27

PICTURE	NO.	GPX CODE	ENGLISH DESCRIPTION	QTY
	1	LEG-27-01	Seat assy, Black	1
	2	LEG-27-02	Bracket B for seat	2
	3	LEG-27-03	Nut M16	4
	4	LEG150S-27-04-03	Tail cover, Matt Black	1
	4	LEG150S-27-04-04	Tail cover, Light Matt Gray	1
	4	LEG150S-27-04-05	Tail cover, Matt Green	1
	5	LEG-27-05	Rr. Arm rest	1
	6	LEG-27-06	Bolt M8x20	2
	7	LEG-27-07	Washer	7
	8	LEG-27-08	Nut M6	7
	9	LEG-27-09	Fr.Foam for Tail cvoer LH.	1
	10	LEG-27-10	Fr.Foam for Tail cvoer RH.	1
	11	LEG-27-11-TH	PatternTail Cover Matt Gray	1
	11	LEG-27-11-01-TH	PatternTail Cover Matt Black	1

โช้กอัพหลัง (REAR SHOCK)

LEG150S-28

PICTURE

NO.

GPX CODE

ENGLISH DESCRIPTION

QTY

1

LEG-28-01-TH

Rr. Shock RH. &RH.

2

2

LEG-28-02

Nut M10*1.25

4

3

LEG-28-03

Washer 10

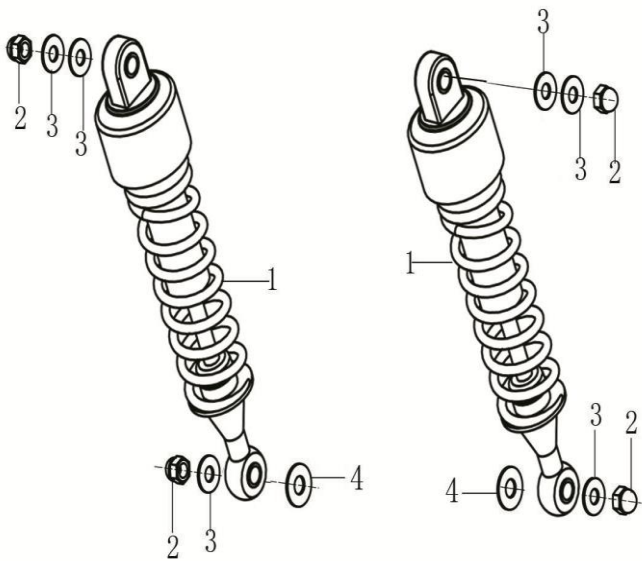
6

4

LEG-28-04

Washer 12

4



บังโคลนหลัง (REAR FENDER)

LEG150S-29

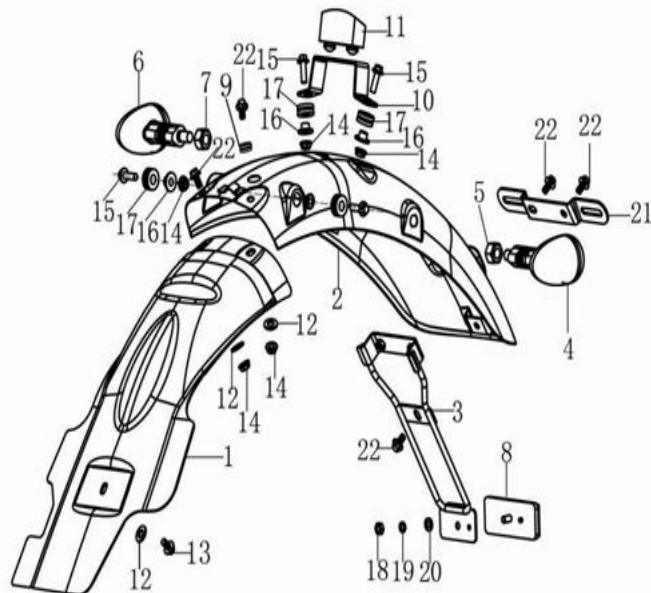
PICTURE

NO.

GPX CODE

ENGLISH DESCRIPTION

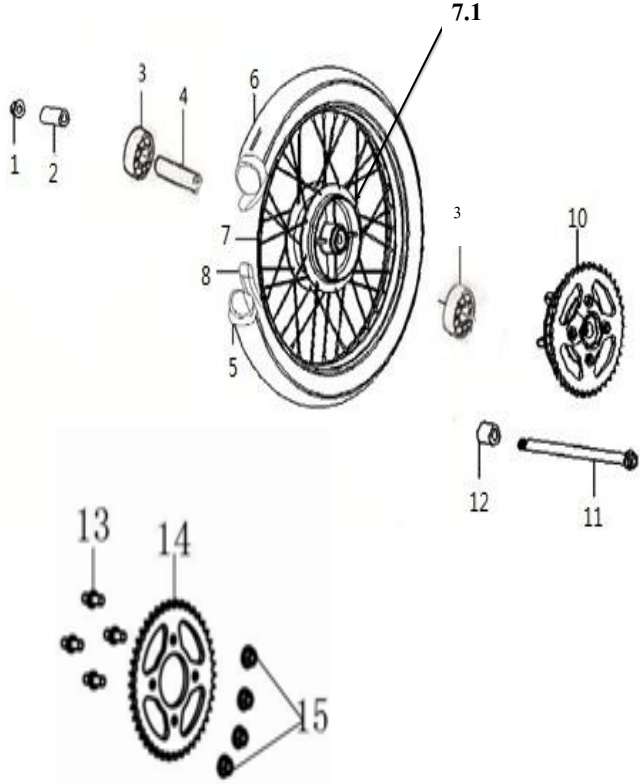
QTY

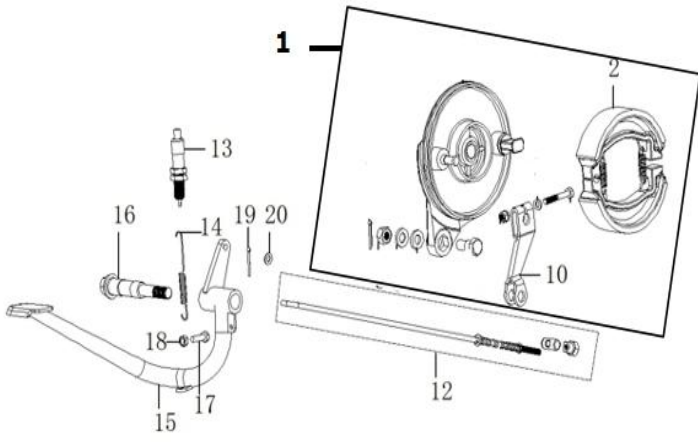


1	LEG-29-01	Rr. Fender A	1
2	LEG150S-29-02-02	Rr. Fender B, Matt Black	1
2	LEG150S-29-02-03	Rr. Fender B,Light Matt Gray	1
2	LEG150S-29-02-04	Rr. Fender B, Matt Green	1
3	LEG-29-03	Bracket for Rr. Reflector	1
4	LEG-29-04	Rr. Turning light LH.	1
5	LEG-29-05	Bolt M6X12	1
6	LEG-29-06	Rr. Turning light RH.	1
7	LEG-29-07	Bolt M6X12	1
8	LEG-29-08	Rr. Reflector	1
9	LEG-29-09	Rubber	1
10	LEG-29-10	Bracket for tail cover	1
11	LEG-29-11	Rubber for tail cover	1
12	LEG-29-12	washer 6	3
13	LEG-29-13	Bolt M6X16	1
14	LEG-29-14	Nut M6	6
15	LEG-29-15	Bolt M6*20	4
16	LEG-29-16	Washer	4
17	LEG-29-17	H aprons	4
18	LEG-29-18	Nut for reflector	1
19	LEG-29-19	washer for reflector	1
20	LEG-29-20	Bush for seat	1
21	LEG-29-21	Bracket for Rr.plate	1
22	LEG-29-22	Bolt M6×12	5

ล้อหลัง (REAR WHEEL)

LEG150S-30

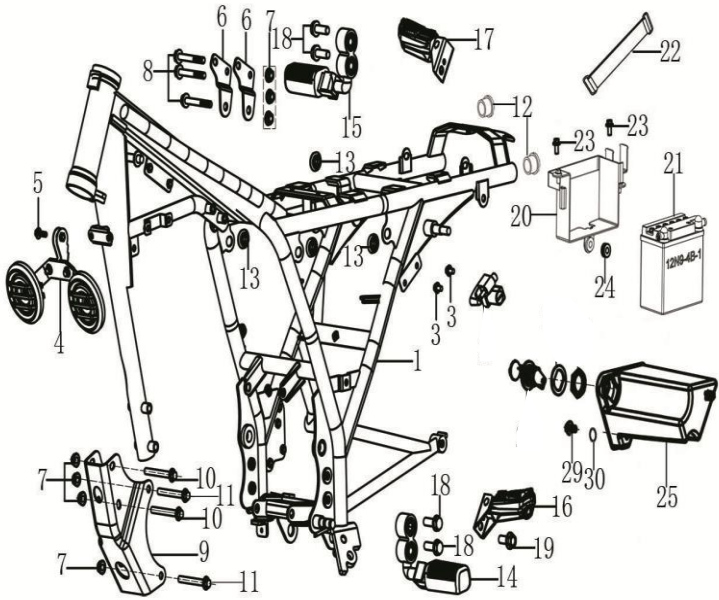
PICTURE	NO.	GPX CODE	ENGLISH DESCRIPTION	QTY	
	1	LEG150S-30-01	Nut M14×1.5	1	
	2	LEG150S-30-02	Rear wheel coller RH.	1	
	3	LEG150S-30-03	Bearing 6302	1	
	4	LEG150S-30-04	Bush	1	
	5	LEG-TINR-450-TH	Rr. wheel inner tire	1	
	6	LEGB200-30-08-TH	Rear wheel outer tire	1	
	7	LEG150S-30-7	Rear wheel assy	1	
	7.1	LEG150S-30-7.1	Rear wheel hub assy	1	
	8	LEG-TRR-TH	Washer	1	
	9	LEG150S-30-9	Bearing 6302	1	
	10	LEG150S-30-10	Rr. Spoklet wheel	1	
	11	LEG150S-30-11	Rear wheel axle	1	
	12	LEG150S-30-12	Rear wheel coller LH.	1	
	13	LEG150S-30-13	Bolt for spoklet	4	
	14	LEG150S-30-14	Rr. Spoklet wheel	1	
	15	LEG150S-30-15	Nut M10×1.25	4	
	20	LEG150-30-20-TH	Rr. Wheel Rim	1	
	21	LEG150S-30-21-TH	Spoke & Nipple Set, Rear	1	
	22	LEG150S-30-22	BUMPING BLOCK,REAR WHEEL	1	
	25	LEG150S-30-21	Spoke & Nipple Set, Rear	1	

เบรคหลัง (REAR BREAK ASSY)				LEG150S-31	
PICTURE	NO.	GPX CODE	ENGLISH DESCRIPTION	QTY	
	1	LEG150S-31-01	Rr. drum break cover	1 sets	
	2	LEG150S-31-02	Rr. drum break pads	1	
	10	LEG150S-31-09	Rr. break arm	1	
	12	LEG150S-31-12	Rr. break rod	1	
	13	LEG150S-31-13	Rr. break switch	1	
	14	LEG150S-31-14	Rr. break spring	1	
	15	LEG150S-31-15	Rr. break padel	1	
	16	LEG150S-31-16	Rr. break arm axle	1	
	17	LEG150S-31-17	Bolt M6×30	1	
	18	LEG150S-31-18	Nut M6	1	
	19	LEG150S-31-19	Pin	1	
	20	LEG150S-31-20	Washer	1	
	21	LEG150S-31-21	RR.Brake Assy(drum to check)	1	

ไฟท้าย (TAIL LIGHT)				LEG150S-32	
PICTURE	NO.	GPX CODE	ENGLISH DESCRIPTION	QTY	
	1	LEG-32-01	Tail light	1	
	2	LEG-32-02	Rubber for taillight	1	
	3	LEG-32-03	washer φ6	3	
	4	LEG-32-04	Nut M6	3	

โครงตัวถัง (FRAME & FOOTREST)

LEG150S-33

PICTURE	NO.	GPX CODE	ENGLISH DESCRIPTION	QTY
	1	LEG150-33-01	Frame	1
	3	LEG-33-03	Bolt M6×10	2
	4	LEG-33-04	Horn DL121(12V 1.5A)	1
	5	LEG-33-05	Bolt M6×16	1
	6	LEG150-33-06	Engine connecting bracket Upper	2
	7	LEG-33-07	NutM8	7
	8	LEG-33-08	BoltM8×65	3
	9	LEG-33-09	Engine connecting bracket Front	1
	10	LEG-33-10	BoltM8×70	2
	11	LEG-33-11	Bolt M8×90	2
	12	LEG-33-12	Rubber	2
	13	LEG-33-13	Rubber for side cover	4
	14	LEG-33-14	Front footrest LH.	1
	15	LEG-33-15	Front footrest RH.	1
	16	LEG-33-16	Rr. footrest LH.	1
	17	LEG-33-17	Rr. footrest RH.	1
	18	LEG-33-18	Bolt	4
	19	LEG-33-19	Bolt	1
	20	LEG150-33-20	Bracket for battery	1
	21	LEG-33-21-TH	Battery	1
	22	LEG-33-22-TH	Ribbon for battery	1
	23	LEG-33-23	M6×12	2
	24	LEG-33-24	H aprons	1
	25	LEG-33-25	Tool box	1
	29	LEG-33-29	Bolt M6×16	1
	30	LEG-33-30	Washer	1

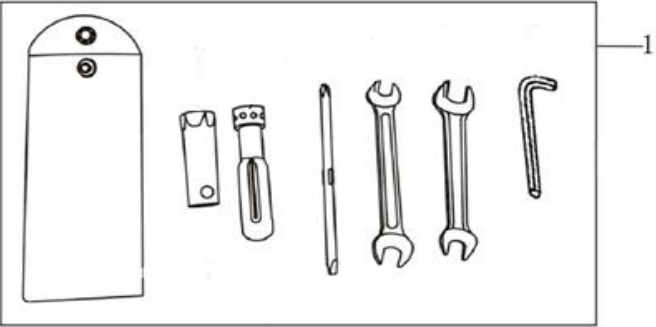
คาร์บูเรเตอร์ (CARBURETOR)

LEG150S-34

PICTURE	NO.	GPX CODE	ENGLISH DESCRIPTION	QTY	
	1	LEG-34-01	Gasket for air inlet	1	
	2	LEG150S-34-02	Carburetor	1	
	3	LEG-34-03	Air inlet pipe	1	
	4	LEG-34-04	Bolt for air inlet	2	
	5	LEG-34-05	Gear shift padel	1	
	6	LEG-34-06	Washer φ12	1	
	7	LEG-34-07	Bolt M10×115	2	
	8	LEG-34-08	Washer 10	2	
	9	LEG-34-09	Washer 10 for spring	2	
	10	LEG-34-10	Nut M10	2	
	21	LEG-34-21	Gasket for carburetor	1	
	22	LEG-34-22	washer for carburetor	1	

สายไฟหลัก อุปกรณ์ไฟฟ้า (MAIN CABLE & ELECTRICAL PARTS)			LEG150S-35	
PICTURE	NO.	GPX CODE	ENGLISH DESCRIPTION	QTY
	1	LEG-35-01	IGNITION COIL	1
	2	LEG-35-02	Bolt M6×16	2
	3	LEG-35-03	STARTING RELAY	1
	4	LEG150-35-04	Ignitor	1
	5	LEG-35-05	Flasher	1
	6	LEG-35-06	Bolt M6×20	2
	7	LEG-35-07	Regulator	1
	8	LEG-35-08-TH	Main cable	1
	9	LEG-35-09	Guard pipe	1

กรองอากาศ (AIR FILTER)				LEG150S-36
PICTURE	NO.	GPX CODE	ENGLISH DESCRIPTION	QTY
	1	LEG-36-01	Air cleaner comp.	1
	2	LEG-36-02	Bolt M5×35	1
	3	LEG-36-03	Hose clip, air cleaner	1
	4	LEG-36-04	Air filter	1
	5	LEG-36-05	Air filter cap	1
	6	LEG-36-06	Bolt	4
	7	LEG-36-07	Bolt M6×16	2
	8	LEG-36-08	Mesh, air filter	1

เครื่องมือประจำรถ (TOOLS)				LEG150S-37
PICTURE	NO.	GPX CODE	ENGLISH DESCRIPTION	QTY
	1	LEG-37-01	Tool kits	1